



## DSC 300P

### More Features, More Reliable

- Better CPU & sensor performance
- 3.5" capacitive touch panel
- Multi-touch (zoom in / out)
- Wi-Fi / Bluetooth module embedded
- HDMI Full HD live stream
- USB plug with lock
- Magnetic pogo touch charger
- Focus wheel



### Diagnostic Set Device to Device for Telemedicine

Connecting vital sign equipment via Bluetooth to collect important measurements. Packing all information and uploading to your EMR system with DSC 300P seamlessly.



### 3.5" Touch screen



Wi-Fi / Bluetooth  
USB / SD card



Cable lock hole

Mini USB

Pogo pad for charger

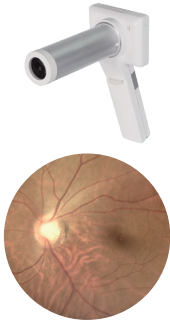
Micro HDMI

USB plug with lock

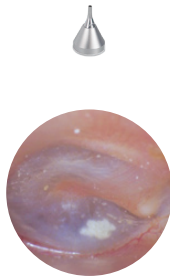
Magnetic charger

## Through The Scope

### Fundus Scope



### Otoscope



### Dermoscope



### Generalscope



### Endoscope



## Specification

Item		DSC 300P	
Sensor		5 Megapixels (2592*1944)	
Focus type		Focus wheel	
LCD monitor		3.5" capacitive touch panel ; multi touch	
Microphone		○	
Speaker		○	
File storage		Micro SD card (2 ~ 32G)	
Interface	Wi - Fi	Embedded	
	Bluetooth	Embedded	
	Micro HDMI (1920 x 1080)	○	
	Magnetic charger	○	
	Mini USB	○	
Function	Manual focus	○	
	Auto exposure (endoscope adapter only)	○	
	Auto white balance (endoscope adapter only)	○	
Lens	Otoscope	DOC 300S	○
		DOC 100S	○
	Dermatoscope	DDC 200	○
		DDC 100	○
	General lens	DGC 100	○
	Eye fundus lens	DEC 100 / EEC 100	○
	Eye anterior lens	DEA 200P	○
		DEA 100 (ILS 100)	○
Endoscope adapter	Adapter 300	○	
Picture resolution		2560 x 1920	
Video resolution		2560 x 1920	
UVC resolution		640 x 480	

• Information contained in this leaflet is subject to change without prior notice.