



DSC 300

More Features, More Reliable

- Multi-touch (zoom in / out)
- Wi-Fi / Bluetooth module embedded
- HDMI Full HD live stream



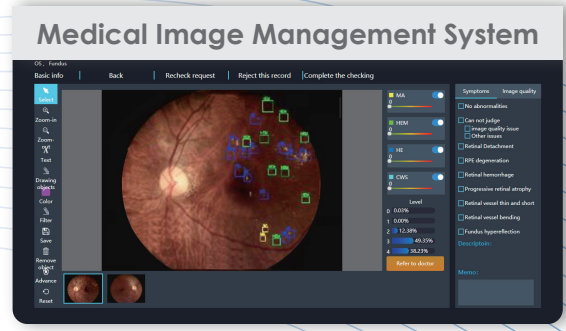
DSC 300 + DIB 100

DIB 100

- Mark symptoms
- Cyber security Wi-Fi connection
- Quick charging

Integration For Software And Hardware-AI Screening

AI Diabetic - Retinopathy Screening Total Solution
Best choice of AI screening pictures provider :
Horus hand-held fundus camera, support real-time features.



Through the Scope

| DEC200 Fundus camera | DGC 200 Eye surface camera | DEA 200 Eye anterior camera |
|--|---|---|
|  |  |  |

DIB 100 User Interface



Power button

Indicator:
Power light (**blue light**)
Analyzing (**white light**)
Connection (**amber light**)

Specification

| Item | | DSC 300 |
|---------------------|-----------------------------|--|
| CPU | | DM388 |
| Sensor | | 5 Megapixels (2560*1920) |
| LCD monitor | | 3.5" capacitive touch panel ; multi touch |
| Microphone | | ○ |
| Speaker | | ○ |
| File storage | | Micro SD card (2 ~ 32G) |
| Interface | Wi - Fi | Embedded |
| | Bluetooth | Embedded |
| | Micro HDMI (1920 x 1080) | ○ |
| | Magnetic charger | ○ |
| | Mini USB | ○ |
| Function | Auto focus | ○ |
| | Auto capture (DEC 200 only) | ○ |
| | Auto exposure | ○ |
| | Quality check | ○ |
| Lens | DEC 200 | ○ |
| | DEA 200 | ○ |
| | DGC 200 | ○ |
| Picture resolution | | 2560 x 1920 |
| Video resolution | | 2560 x 1920 |
| UVC resolution | | 640 x 480 |
| Item | | DIB 100 |
| AI performance | | 1.3 TFLOPs |
| GPU | | 256-core NVIDIA Pascal™ GPU |
| CPU | | Dual-core NVIDIA denver 264-bit CPU and quad-core ARM @ Cortex @-A57 MP core |
| Memory | | 8GB 128-bit LPDDR4 memory |
| Storage | | 32GB eMMC 5.1 |
| Wi-Fi | | Embedded |
| Indicator | | 3 LEDs: blue, white, amber |
| Power | | 12V@3A |
| Charging capability | | 5V@1.2A |

• Information contained in this leaflet is subject to change without prior notice.