

GFC

Milano - Made in Italy

**OPTICAL
EQUIPMENT
MANUFACTURER**



GFC has been established in 1982 in Milan and is an international well-known Italian manufacturer of professional equipment for opticians and optical laboratories. Its production is entirely based in Italy, with a selected and trusty chain of Italian suppliers both for mechanical and electronic components. Its founder Gianfranco Conti invented and patented the first frame heater in the world. High quality and solidity typify all the GFC products, that are sold through a reliable distributors' net, present quite all over the world.

Since 2006, the founder's daughter, Francesca has been managing the company, boosting its growth further, investing in product design and respecting the company values: constant innovation, flexible customisation and attentive after-sales service.

GFC exhibits every year at MIDO, the most important optical exhibition in the world.



- On all GFC machines:
- CE Compliance
 - Three years guarantee
 - Immediate delivery
 - WEEE Conformity
 - 230V, 115V and 240V availability

page

Frame Heaters	4
Testers	6
Lens Colouring and Grading Machines	8
Polishing Machines	10
Drilling Machines	12
Hinge Inserting Heated Plier and Welding Machine	14

FRAME HEATERS

Maga S

code A200-S

Frame heater

- Two temperature levels (~70°C – ~90°C / ~130°C – ~170°C).
- Up to ~180°C in the working area with hot air concentrator inserted.
- Cold air.
- Dual air flow, fully enfoldng the part of the frame to be softened, without having to move frame.
- Electronic heating regulator.
- Thermal cut-out switch for overheat protection.
- 1500 W (+5%/-10%).



Zita Base

code A1800

Zita Plus

code A2700



Frame Heater

- Two temperature levels: yellow ~ 70°C / red ~ 130°C.
- Dual air flow, fully enfoldng the part of the frame to be softened, without having to move frame.
- Thermal cut-out switch for overheat protection.
- It can be inserted into a bench.
- Heat resistant plastic housing.
- 900 W (+5%/-10%).

- Electronic heating regulator (ZITA PLUS).
- Two temperature ranges (ZITA PLUS): yellow ~60°C – ~100°C red ~120°C – ~150°C.

Fata

code opaque white A4000/WH

Fata +

codes opaque white | brilliant black A4000P/WH | A4000P/BK

Fata Up

code opaque white A4100/WH

Fata Up +

codes opaque white | brilliant black A4100P/WH | A4100P/BK

Extension for Hot Air Concentrator code M1202



Frame heater

- Max temperature: ~ 150°C with closed lid ~ 190 °C with hot air concentrator inserted ~ 190 °C with hot air concentrator extension inserted.
- Thermal cut-out switch for overheat protection.
- Electronic heating regulator (FATA PLUS).
- Cold air (FATA PLUS).
- Aluminium housing.
- 350 W (+5%/-10%).

Vispa

code A1200

Vispa Up

code A1600



Frame heater

- Temperature: ~ 120°C with closed lid ~ 150 °C with hot air concentrator inserted.
- Thermal cut-out switch for overheat protection.
- Metal housing.
- 350 W (+5%/-10%).

TESTERS

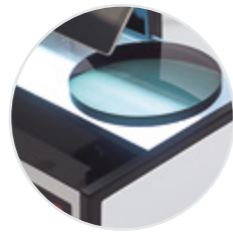
Test Fotocromatico

code A1300



Photochromic Test

- It checks and demonstrates the photochromic properties of the lens.
- The photochromic lens starts darkening in few seconds.
- 9 W.



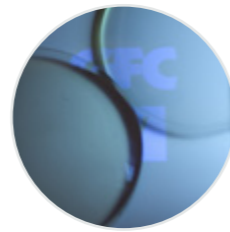
UV Test Stick

code M1U002



UV Test

- A cheap and instant method to check the actual presence of ultraviolet protection treatment on transparent lens.
- It should be combined with the Photochromic Test.



Pupillo

code A3200



Lens engraving and marking reader

- It identifies the lens manufacturer's marks.
- It identifies the extra power of the progressive lens.
- For CR39, Polycarbonate and high index lenses.
- It's the only one having the chance of inclination, favouring the posture of the user, according to everyone's needs.
- 5 W led lamp.



6

Tensiometro

code A2100



Tensiometer

- Stress test on mounted lenses.
- Tension is always applied when mounting a lens. If wrongly applied, such stress can cause distortion and, in glass lenses, chips. Any excessive tensioning on fitted lens, identified by the tensiometer, must be eliminated.
- It is the only one having the chance of inclination, favouring the posture of the user, according to everyone's need.
- 5 W led lamp.



Hand Tensiometer

code A3800



Tensiometer

- Cordless, portable and compact stress test on mounted lenses.
- Tension is always applied when mounting a lens. If wrongly applied, such stress can cause distortion and, in glass lenses, chips. Any excessive tensioning on fitted lens, identified by the Hand Tensiometer, must be eliminated.
- 9V battery.

7



LENS COLOURING AND GRADING MACHINES

Tinta 2
code A2500

Tinta
code A1700



Organic lens colouring machines with four or two electric plates

- Timer with alarm for regulation of the pre-heating phase.
- Energy regulator (one for each couple of plates) for automatic maintenance of the settled temperature during the colouring process.

Ala
code A700



Organic lenses' grading machine

- It is equipped with a double motion, thereby assuring a smooth grading of the lens avoiding line formation.
- The gradation on the lens can be adjusted by the operator.
- Any lens shape may be graded.

8

Lens Holders (accessories for all the tinting units)



- Metal lens holder (2 independent lenses)
code C402
- Double metal lens holder (4 independent lenses)
code C403
- Plastic lens holder (2 same size lenses)
code C405

Steel Pots



- Steel pot with steel handle, and lid. 1 litre capacity.
code C406
- Steel pot with straight steel handle and lid, for Rainbow. 1 litre capacity.
code C407

9

Sunbeam
code A3900



Led light pad

- It simulates the sunlight and allows the realistic sight of the lens colouring tone. It invalidates the alteration of the colours created by the artificial light.
- Solar light 5400 Kelvin - 4073lm.
- 24V low power consumption.
- Up to 50000h lifetime guaranteed.
- Tapered shape for an easy positioning on the bench.

POLISHING MACHINES

Bip 2

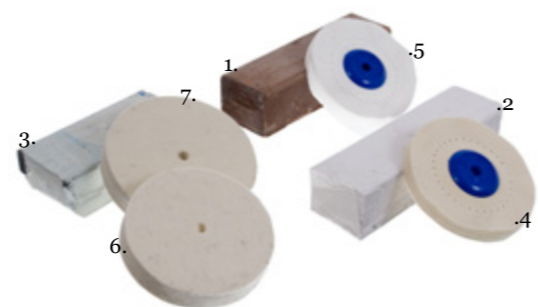
code A2050



Polishing Machine

- Particularly hardy and silent two speeds polishing machine (1400-2800rpm), ideal for high performance continuative use.
- Its driving-shaft revolves on ball bearings, the starting up is automatic and requires no auxiliary device.
- Supplied with 1 right side conical tip and 1 left side conical tip.

Abrasive Pastes and Wheels



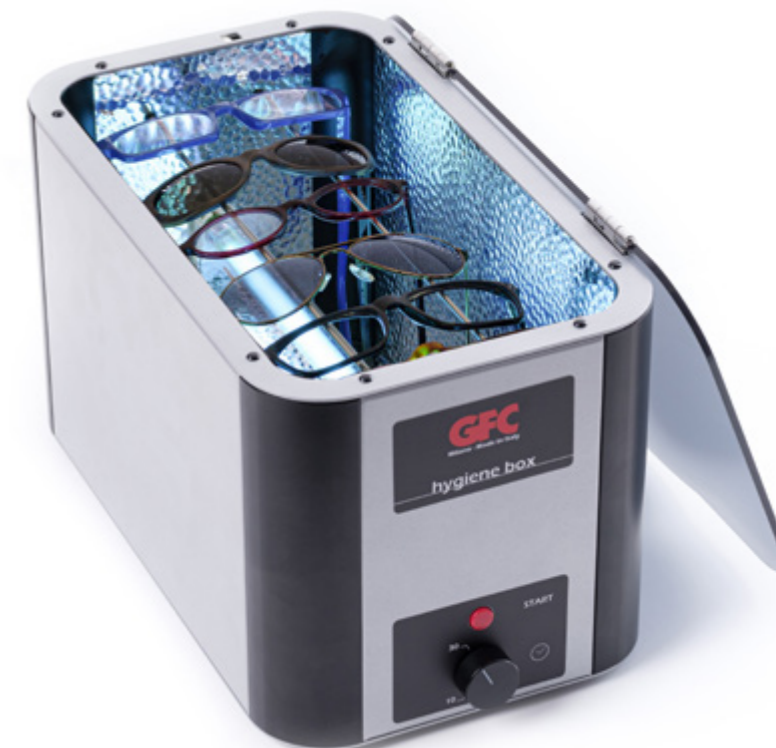
- 1) Abrasive paste for celluloid frames, for wheel no.5
code C1006
- 2) Abrasive paste for metal spectacle frames, for wheel no.4
code C1005
- 3) Abrasive paste for wheels no.6 and no.7
code C1009
- 4) Canvas polishing wheel (for metal welded spectacle frames)
code C1002
- 5) Cotton polishing wheel (for celluloid frames).
code C1001
- 6) Lenses' edge finishing felt wheel.
code C1008
- 7) Lenses' edge polishing felt wheel, with groove.
code C1007

Hygiene Box

code A3400

Sanitizer with germicide UV lamp

- Ideal for the optician that wishes to sanitize trial glasses, without using water or other fluids, with neither cleanser nor heat
- Through the utilization of a UV-C bulb with high germicide power it destroys the bacteria, viruses, germs, spores, molds and other micro-organisms or pathogens from the surface of the glasses in a few seconds, by modifying their DNA
- Germicide power is maximized due to internal reflecting hammered and mirrored aluminum surfaces and to the way the glasses are hung, that allows a direct and close exposition of the glasses critical areas, the ones closer to people's eyes, such as the nosepad, the bridge, the hinges to UV-C rays
- You can sanitize up to about 7 frames simultaneously, depending on their size
- An electronic timer allows you to choose the sanitization time between 10 seconds and 1 minute maximum, then automatically turning off the bulb
- Safety of the user guaranteed from a cut-out switch that automatically turns off the light in case of sudden opening of the lid



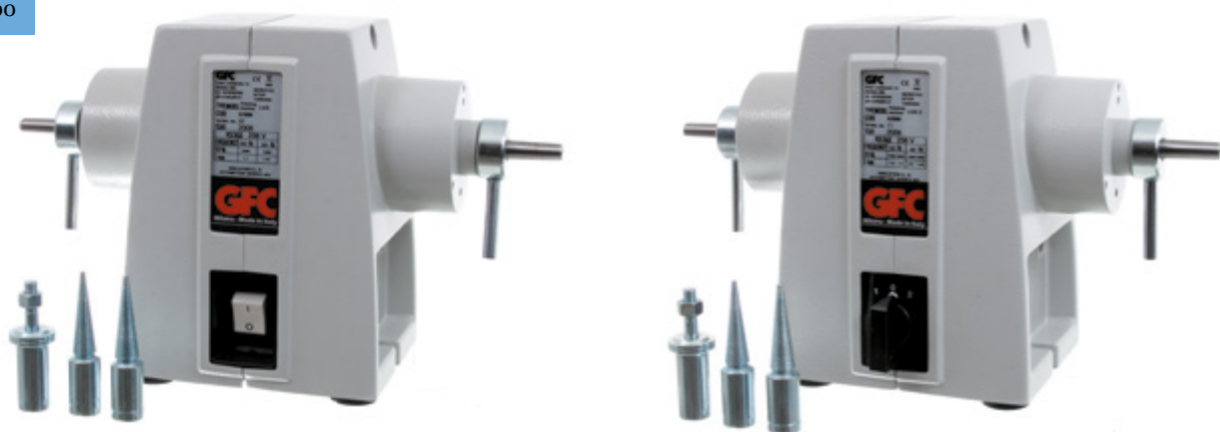
10

Lux

code A1000

Lux 2

code A2000



Polishing Machine

- One speed (2800rpm) or two speeds (1400-2800rpm) motor, including two conical tips (right and left) and one wheel centre.

Accessories for all the polishing units

Metal protection cover, with removable plastic tray.

code C1010ME

Silicone protection cover.

code C1010SI



11

Accessory Basket

code C3402

(Optional)

A practical painted basket, which easily fits into the equipment, offers the possibility of sanitizing optical smaller parts, such as lenses and tools, and small objects of daily use such as keys, masks, pens, mobile phones etc.



VISMEDERI LIFE SCIENCES
CERTIFIED COVID-19 CLEAN

average of reduction
of 99.9%
after 30 seconds
of exposure against the virus
SARS-CoV-2_COV2019

average of reduction
of 99.9%
after 60 seconds
of exposure against the bacterium
Escherichia Coli ATCC 8739

average of reduction
of 99.9%
after 90 seconds
of exposure against the bacterium
Staphylococcus Aureus ATCC 6538P

DRILLING SYSTEMS

Colonna GFC

code A3000+ A3001



Manual Column + Lens' Support Bar

- It realizes holes, slot-shaped apertures and milling.
- Horizontally pivoted cylinder for oblique holes.
- Possibility of Column lock during descent.
- Angle of drill head for pantoscopic angle.
- Interchangeable motor fastening modules for different drill diameters (Proxxon drill, Master drill, Dremel 300 and Dremel 3000).

Proxxon Drill

code A2400



Proxxon Drill

- Motor with speed regulator up to 20000 rpm.
- Completed with six steel collects to fit points or cutters with different tangs (1.0 - 1.5 - 2.0 - 2.4 - 3.0 - 3.2).

Points and Cutters



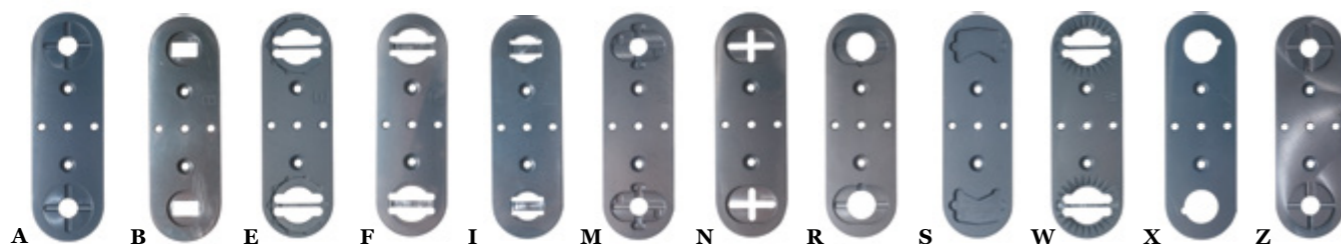
- Point-cutter 1.2mm, tang 3.175mm. (no.1)
- Cutter 1.2mm (for polycarbonate lenses), tang 3.175mm. (no.2)
- Diamond conical cutter, tang 2.35mm. (no.3)
- Diamond circular cutter (to round off Glasant screws), tang 2.35mm. (no.5)
- Diamond circular cutter, tang 2.35mm. (no.6)
- Cutters' box. (no.9)
- Point-cutter 1.1mm, tang 3.175mm. (no.10)
- Point-cutter 0.8mm, tang 3.175mm. (no.12)
- Point-cutter 1mm, tang 3.175mm. (no.13)
- Point-cutter 1.4mm, tang 3.175mm. (no.14)
- Point-cutter 1.6mm, tang 3.175mm. (no.15)
- Point-cutter 1.8mm, tang 3.175mm. (no.16)
- Point-cutter 2.0mm, tang 3.175mm. (no.18)

12

Centering Devices

Inverter

code C3002



- | | |
|--------------------------|----------------------------------|
| A orange ESSILOR | N SHURON-COBURN |
| B old BRIOT | R SEMI-TECH |
| E blue ESSILOR | S STEP-TWO |
| F FOMAP | W WECO-NIDEK-BRIOT-TOPCON |
| I INDO-HOYA-NIDEK | X AXCELL |
| M AIT | Z SEFO |

We produce a range of 12 centering devices for the buttons of all the lenses manufacturers existing on the market.
Inverter allows to drill and mill the lens from the outside surface.



13



HINGE INSERTING HEATED PLIER AND WELDING MACHINE

Prima 82 code A182

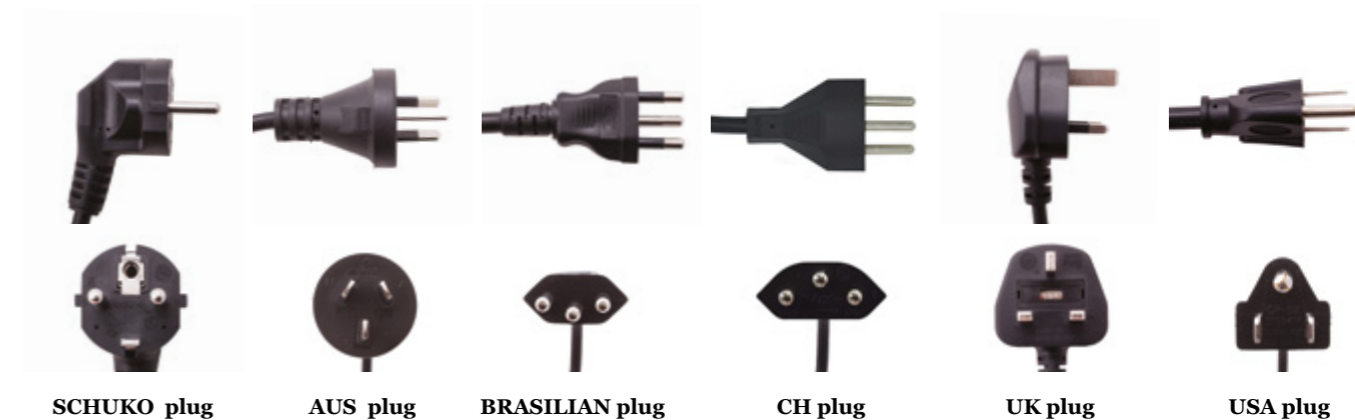


Hinge inserting heated plier

- It enables the removal of broken hidden hinges and the insertion of a replacement in less than one minute.
- It repairs acetate frames by means of inserting staples.
- It embeds metal pad arms into plastic frames.
- Foot pedal control.



International Plugs



- SCHUKO plug (F type)
- AUS plug (I type)
- BRASILIAN plug (IEC 60906-1 type)
- CH plug (J type)
- UK plug (G type)
- USA plug (B type)

14

Titta and Welding Accessories code A500



Electric carbon welding machine

- Electronic power regulator.
- Foot pedal control.
- Deoxidizing paste (Borax) code 303



15



