



Non-mydriatic Fundus Camera

Kowa

8MEG

*nonmyd*  $\alpha$ -D III



Technology for Life Science

**NEW**



**Internal  
8 megapixel  
Digital Camera**





The nonmyd α-D III is a compact digital camera that continues Kowa's tradition to fit the new age of electronic imaging technology. Kowa offers speed, reliability and high resolution photographs in a striking design.

### ERGONOMIC DESIGN

The all-in-one compact, lightweight digital fundus camera incorporates advanced technology in an efficient design.

This cost effective design uses intuitive ergonomic operations that makes photographic results easy to capture.

### EASY-TO-USE

Easy to use controls are located at your fingertips.

The conveniently located controls makes rapid screening easy; all operations can be carried out with the simple touch of a button.

### 9 POINTS INTERNAL FIXATION

The nonmyd α-D III has two fixation modes that provide up to 9 fixation positions, "Normal" and "Mosaic".

The "Mosaic mode" provides 9 fixation points for a panorama image covering a retinal area of approximately 85 degrees when using the "montage" application integrated in the digital imaging system. When using the "Normal mode" three positions are selectable Central, Disc and Macula.



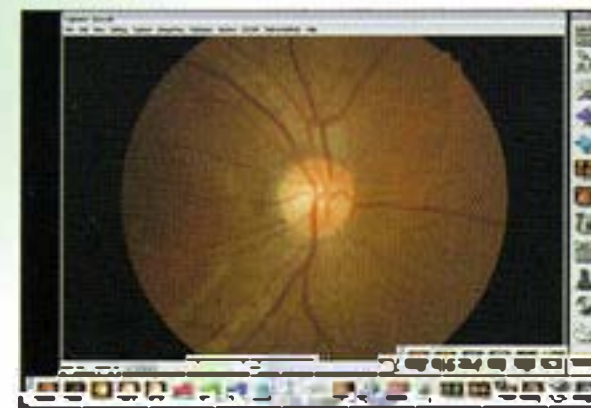
### HIGH RESOLUTION



The nonmyd α-D III utilizes an internal 8 megapixel digital camera.

The high resolution digital camera provides detailed, diagnostic quality images with Kowa's exclusive "Aspherical" optical system.

### PLUG-AND-PLAY



The nonmyd α-D III connects to the computer through a USB interface that makes set-up and operations plug and play.

The camera can be used with either a desktop or notebook computer with the Kowa Portable VK-2 digital imaging system. Regardless of the volume of photographs taken, the nonmyd α-D III & Kowa Portable VK-2 lets you store, restore and compare data with ease. Shoot and forget allows easy image storage and automatic image saving.

### Specifications

<b>Picture angle</b>	45° / 30° two angles (optical)
<b>Shooting mode</b>	Normal / Mosaic (electrically switched)
<b>Effective pupil diameter</b>	φ 4mm (small pupil mode: φ 3.5mm)
<b>Working distance</b>	30mm (distance of examined eye to front end of objective lens)
<b>Compensation range of examined eye</b>	Without compensation : -15m <sup>-1</sup> (D) ~ +13m <sup>-1</sup> (D) Compensation - : -12m <sup>-1</sup> (D) ~ -32m <sup>-1</sup> (D) Compensation + : +10m <sup>-1</sup> (D) ~ +40m <sup>-1</sup> (D)
<b>Focusing</b>	Split luminous bars coincidence
<b>Working distance adjustment</b>	2 luminous dots indication type (anterior segment / fundus electrically switched)
<b>Camera</b>	8.3 megapixel CCD camera
<b>Monitor</b>	5.7 inch LCD monitor

<b>Interface</b>	USB
<b>Internal fixation target</b>	Normal: 3 positions (Central, Disc, Macula) Mosaic: 9 positions
<b>External fixation target</b>	Red light (option)
<b>Optical head base moving distance</b>	Movable 40mm forward / backward Movable 100mm leftward / rightward Movable 30mm vertically (electric)
<b>Chin rest moving distance</b>	Movable 60mm (electric)
<b>Power Supply</b>	Input: AC100V — AC240V 50 / 60Hz automatic voltage selection Power consumption: 150VA (normal) / 250VA (maximum)
<b>Dimensions</b>	310(W) × 505(D) × 462(H)mm
<b>Weight</b>	22kg / 48lbs.

Images of the monitor are compositions.

nonmyd is a registered trademark of Kowa Company, Ltd. in the United States, Germany, Japan and other countries. Specifications and appearances are subject to change without notice.

Distribution name: KOWA nonmyd α-D III

